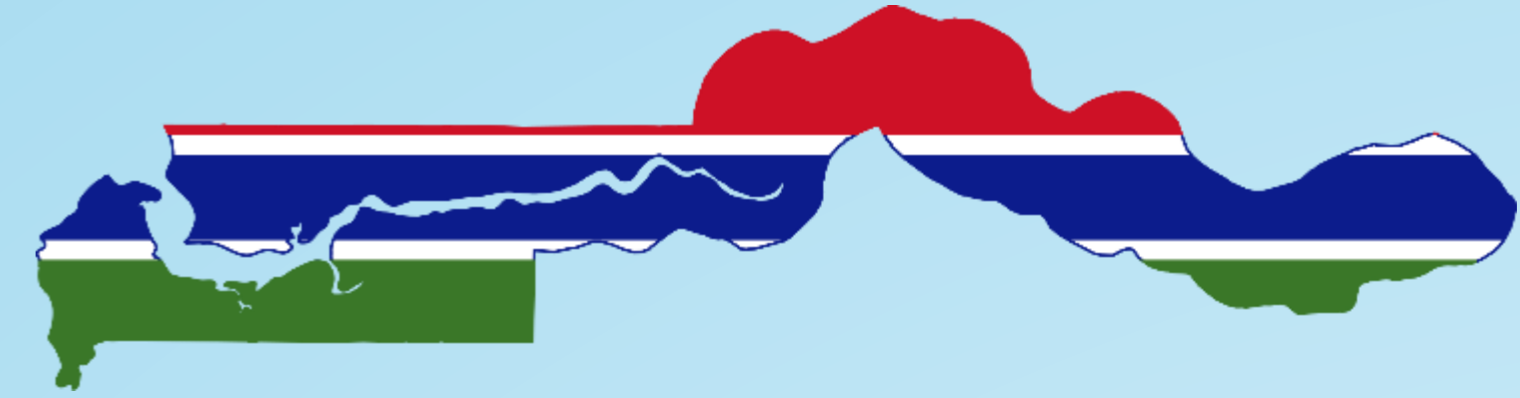


SOCIOECONOMIC EFFECT OF COVID-19 ON THE GAMBIA (Short-Term)



The Current Situation



Total Number of Cases (Deaths)

10 (1)



GDP Growth (est.) End March

2.5%



Loss in Revenue in Tourism Sector

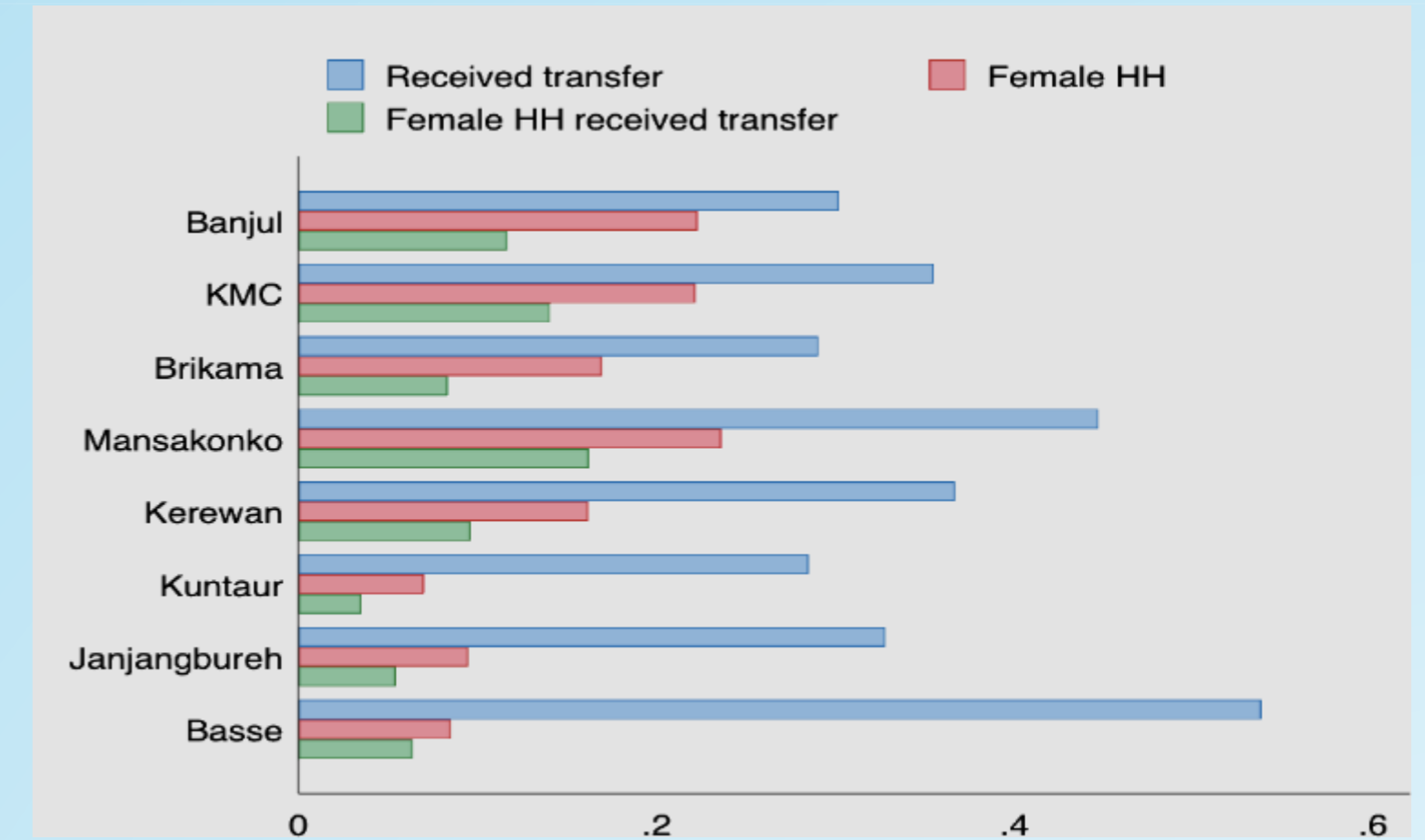
\$108.5M



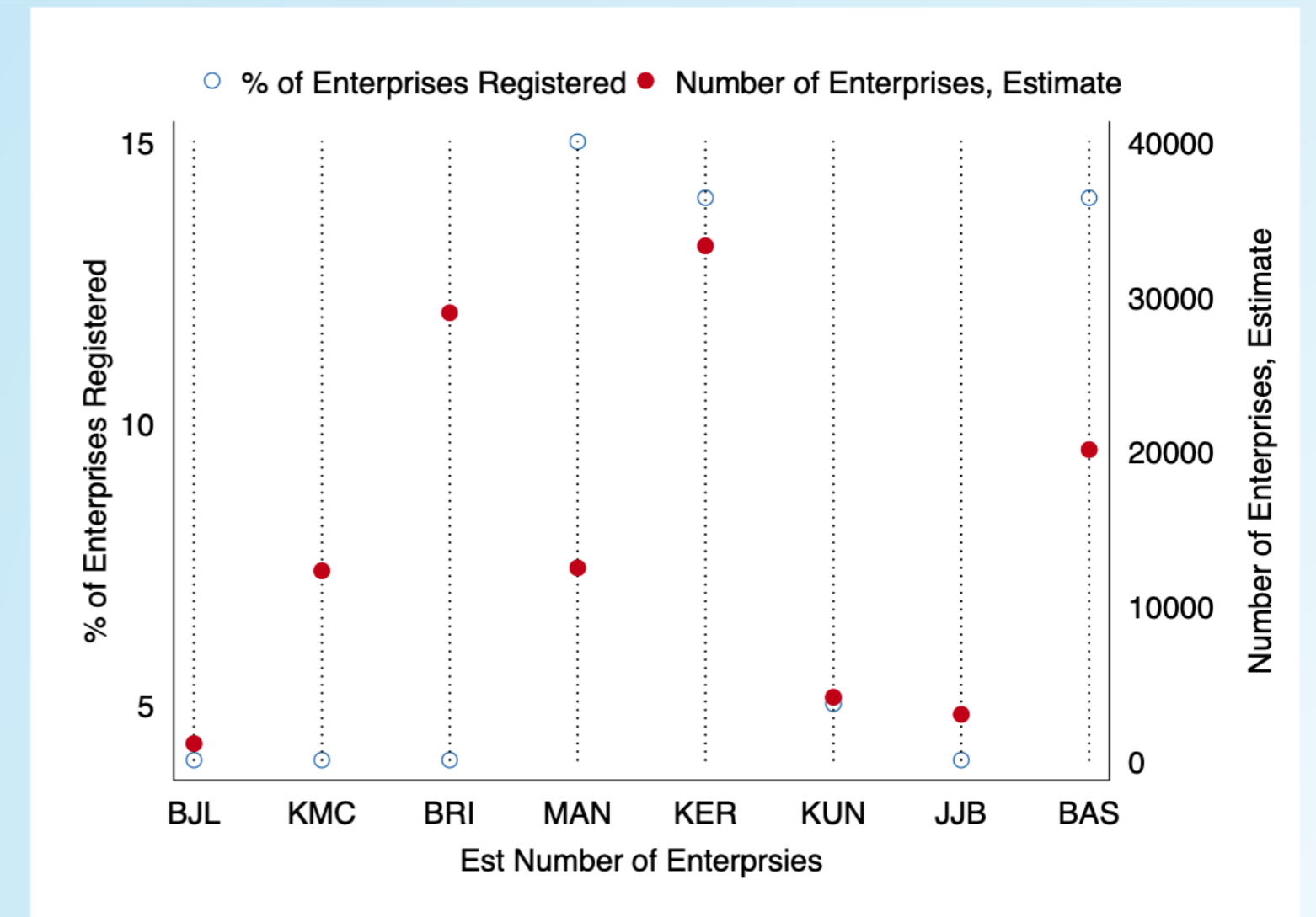
Fall in Government Revenue

\$20M

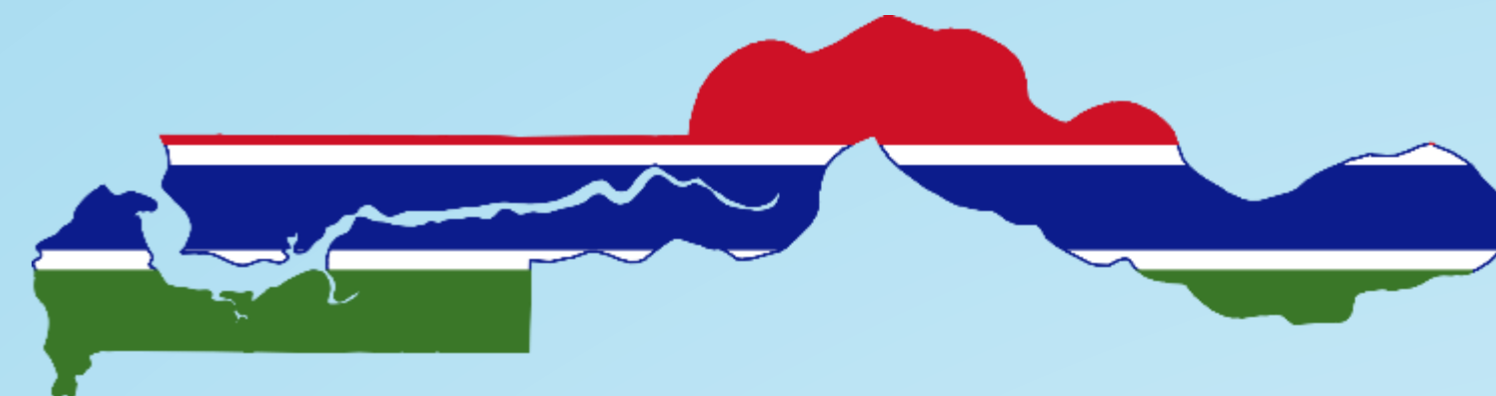
Remittance Received by LGA



Registered Enterprise by LGA



RECOMMENDATIONS FOR THE SHORT TERM



Containment and Prevention

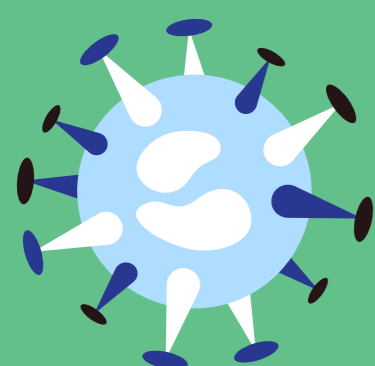


Increase testing

Strengthen Quarantine Process

Building Capacity

Ensuring continuity of government and economy



Working remotely

VPN access for government staff that need to work remotely.

Social Protection Measures



Cash transfer

Grants and Loans to SMEs

Loans Restructuring

Reopening the Economy



Depend on mass testing and number of new cases

Opening of economy in stages